



# ***A Higher Standard of Care For a Better Quality of Life***



Originally founded in 1989, QLRAD™ was established to specialize in the development, design & manufacturing of medical devices specifically for and manufacturing of medical devices specifically for the field of radiotherapy and radiology. Since 2009, QLRAD™ has provided the radiotherapy market with innovative medical devices created by focusing on, first and foremost, the patient. QLRAD™ offers several products to facilitate safe and effective radiotherapy of prostate malignancies such as endorectal balloons, implantable gold fiducials and accessories for interstitial prostate brachytherapy. QLRAD™ currently serves customers in North & South America, Europe, Australia, New Zealand, Asia, and other global areas.



**QLRAD Inc. Miami**



**QLRAD International Ltd**

QLRAD's strength lies in our ability to customize our product's designs to meet the needs of our customers rapidly. We feel our design concepts should be guided by the expertise and feedback we receive from our clinician partners. To this end, all of our product ideas are developed in cooperation with physician, physicist and other medical professionals from all over the world. QLRAD's partnership with these professionals provides an avenue for the vetting and refinement of our designs, ensuring they are truly "state of the art".

# RectalPro™

## Prostate Endorectal Balloon (ERB)



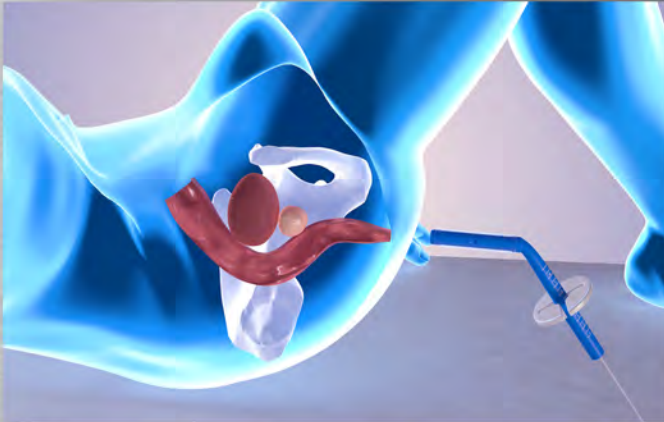
**Advanced Technology - Prostate ERB**

**Proton Therapy - IMRT/SBRT**

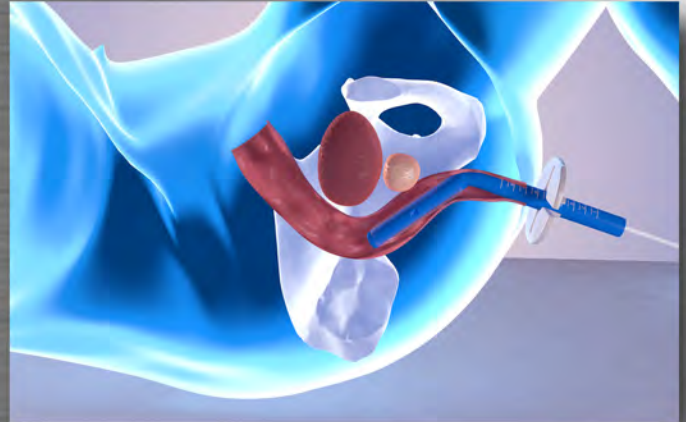
**Brachytherapy - Prostate Beds**

# RectalPro™

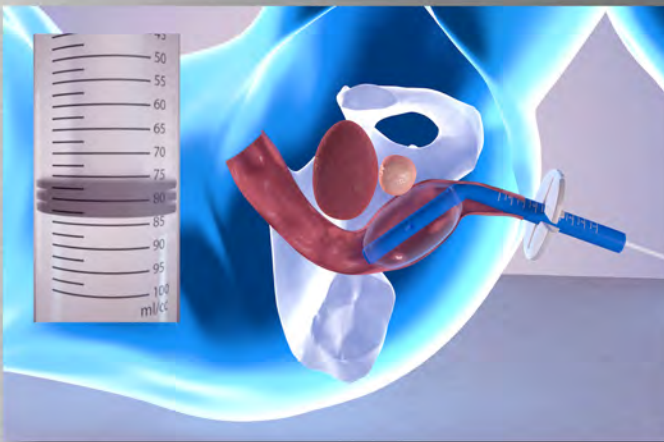
## Prostate Endorectal Balloon (ERB)



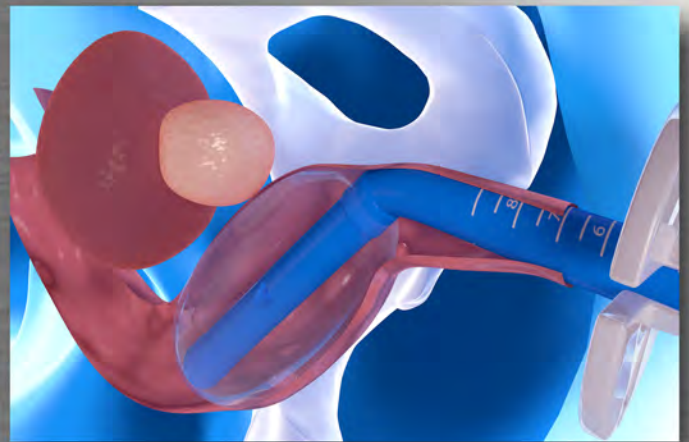
Insert the ERB tip towards the table/couch and follow the anatomical curve of the colon



ERB inserted



Slowly inflate with air/water 60-100cc with physician's directions

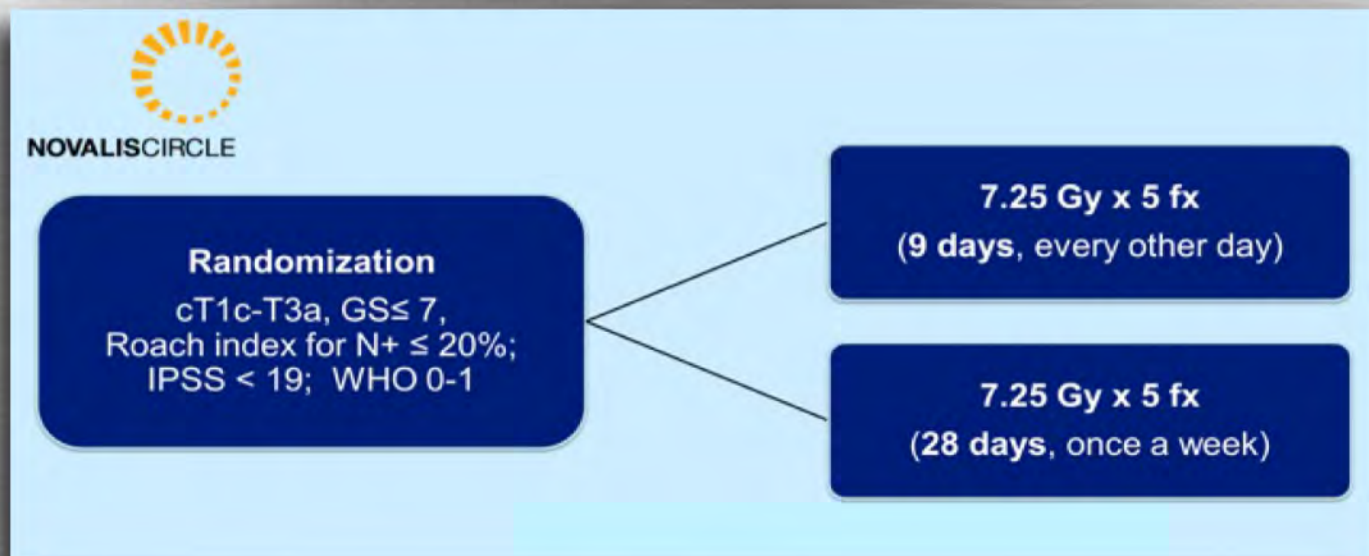


After inflation, pull down the ERB and affix the stopper

# SBRT FOR PROSTATE CANCER A RANDOMIZED PHASE II TRIAL

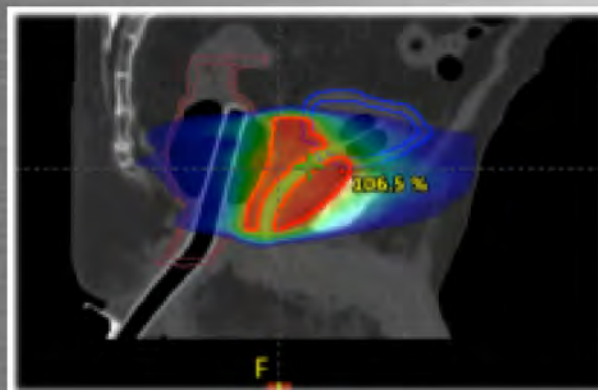
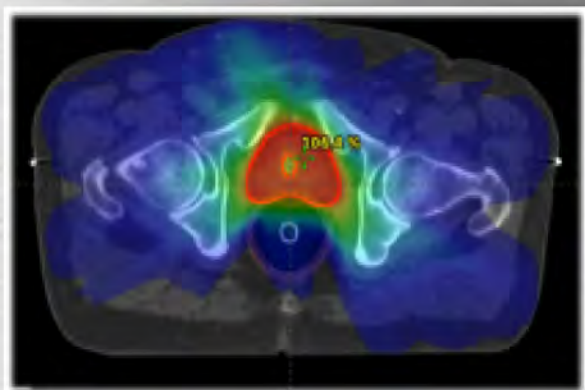


Thomas ZILLI, MD  
Prof. Raymond MIRALBELL, MD



## ESTRO meeting 2017 Vienna

- 170 randomized patients (2012-2015)
- Complete recovery to the GI baseline status at the 12 week follow-up
- 12-weeks results demonstrate for both study arms the feasibility, tolerance, and good acute toxicity of an SBRT



# RectalPro™

## Prostate Endorectal Balloon (ERB)



Reduces ano-rectal toxicity

Increases Gland stability

Optimal reproducibility

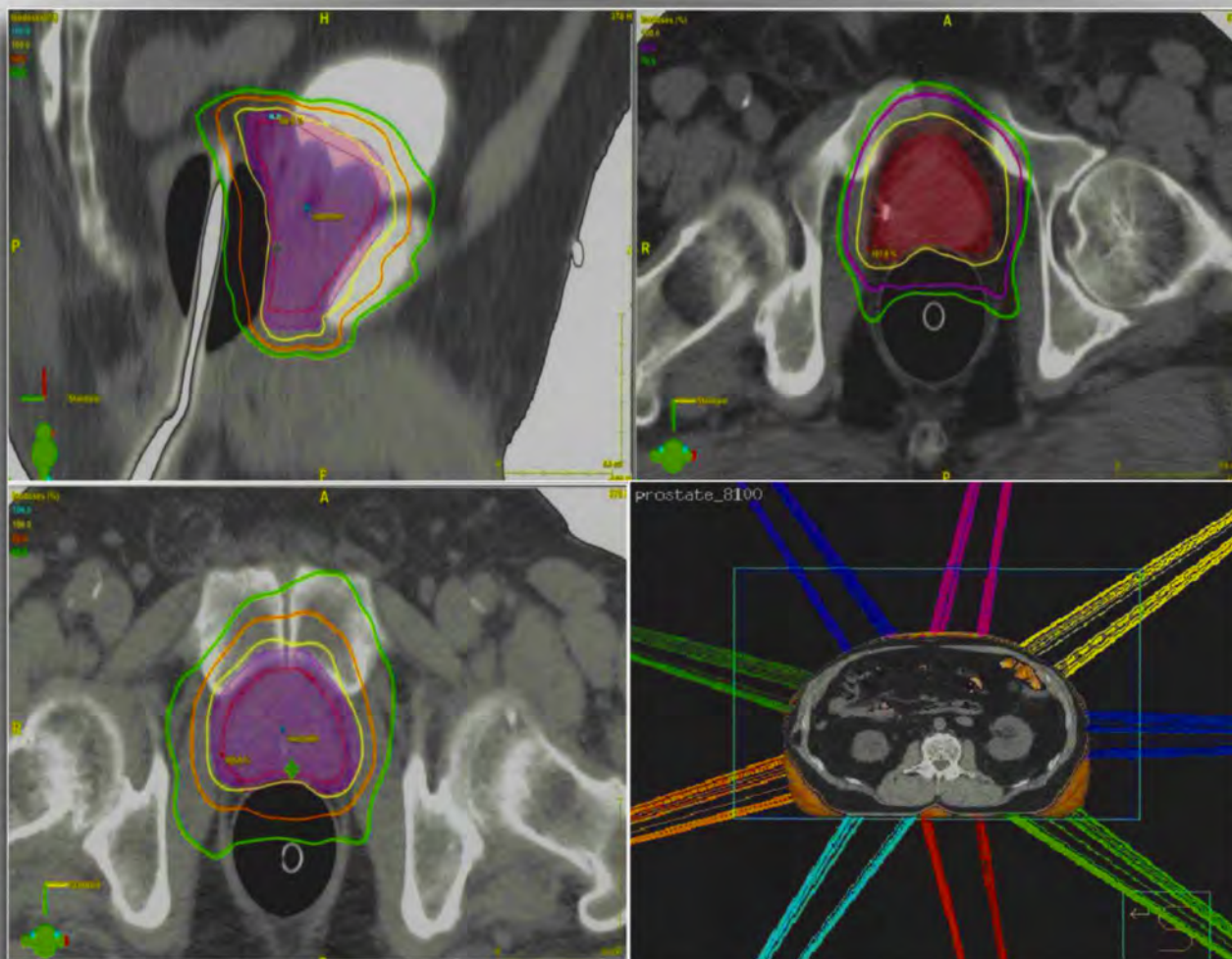
Sparing effect of rectal walls and sphincter

### Features of the QLRAD ERB

- Curved shaft designed to promote patient comfort
- Reproducible balloon positioning
- Air/water fill volume able to be varied according to clinician preferences

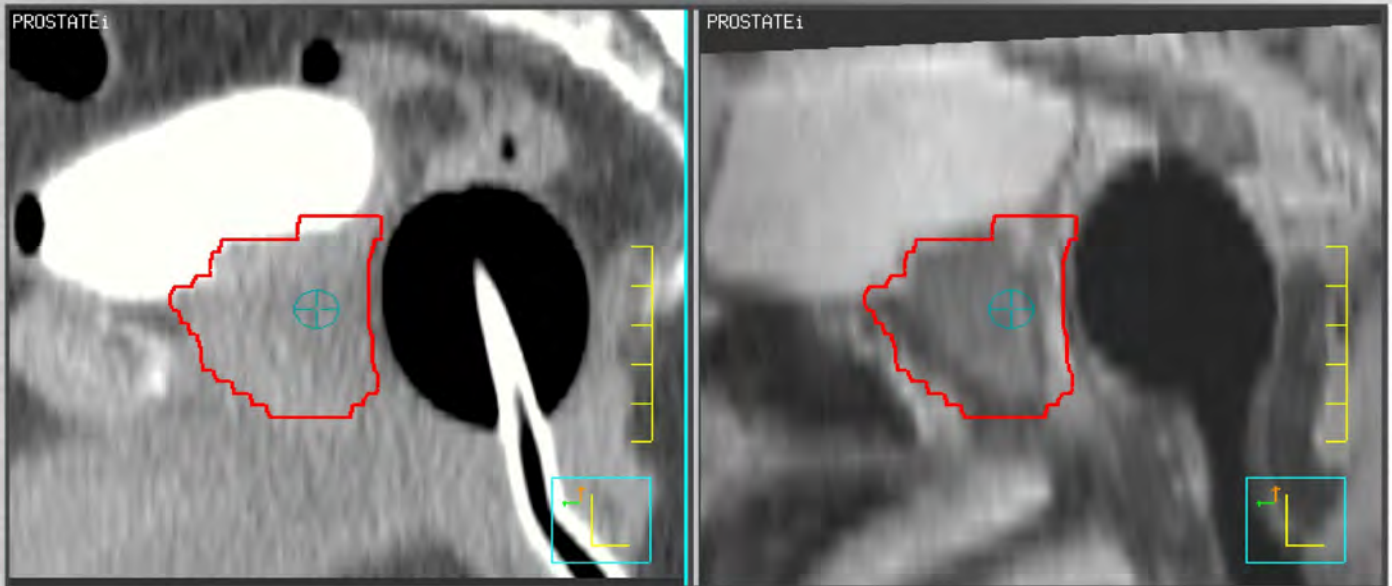
# Potential Benefits of Endo-Rectal Balloons During IMRT for Localized Prostate Cancer

- Limit prostate intra-fraction motion during IMRT
- Decrease anal and rectal late toxicity
- Distends rectum, so lower percent of rectum treated
- Reduces objective rectal mucosal telangiectasias
- Limits prostate movement while “beam on”
- Increases ease of visualization in daily set-up in bilateral THR patients

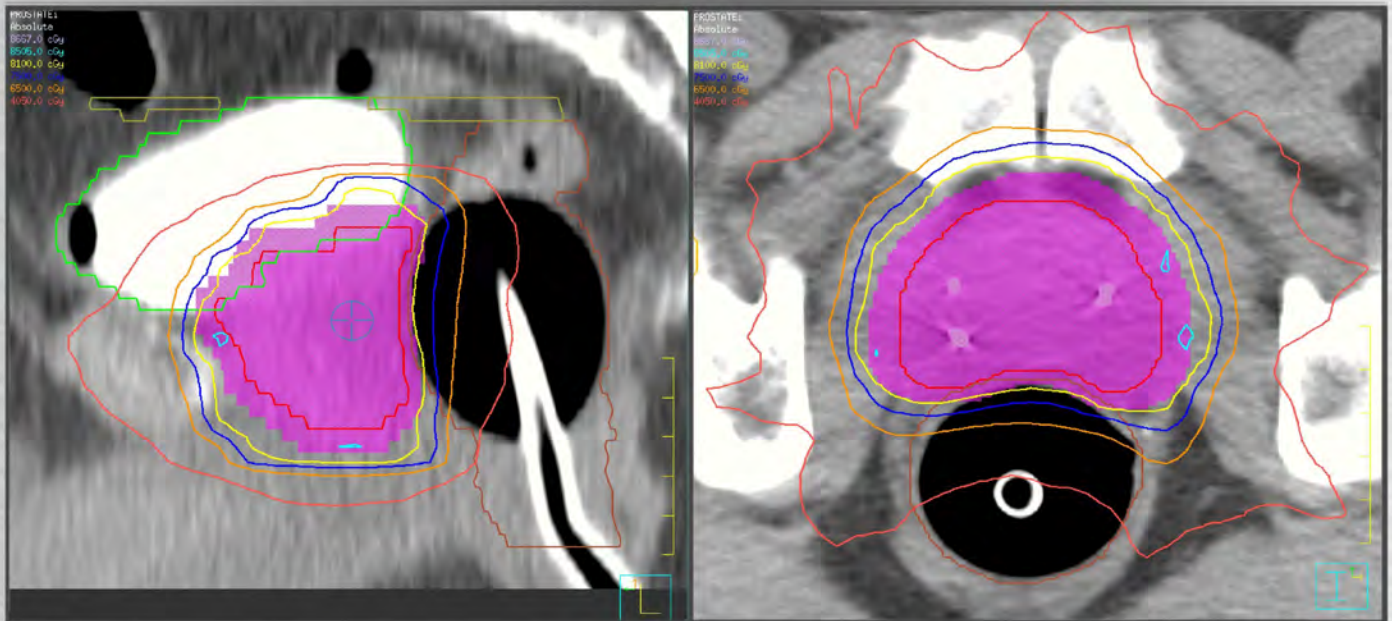


For the entire presentation please visit our website [www.QLRAD.com](http://www.QLRAD.com)

# RectalPro™ Endorectal Balloon (ERB)



CT and MRI views



Sagittal view with isodose curves

Transverse view with isodose curves





CPT Codes	Description of the procedure	APC	ASC	Physician
<b>77334</b>	Treatment devices, design and construction; complex (irregular blocks, special shields, compensators, wedges, molds or casts)	* <b>\$133.15</b>	* <b>\$60.25</b>	* <b>\$64.85</b>
<b>99070</b>	Supplies and materials (except spectacles), provided by the Payor physician or other qualified health care professional over and above those usually included with the office visit or other services rendered (list drugs, trays, supplies, or materials provided)	Payor Priced	N/A	N/A
<b>A4649</b>	Surgical supply; miscellaneous	Payor priced	Payor priced	N/A

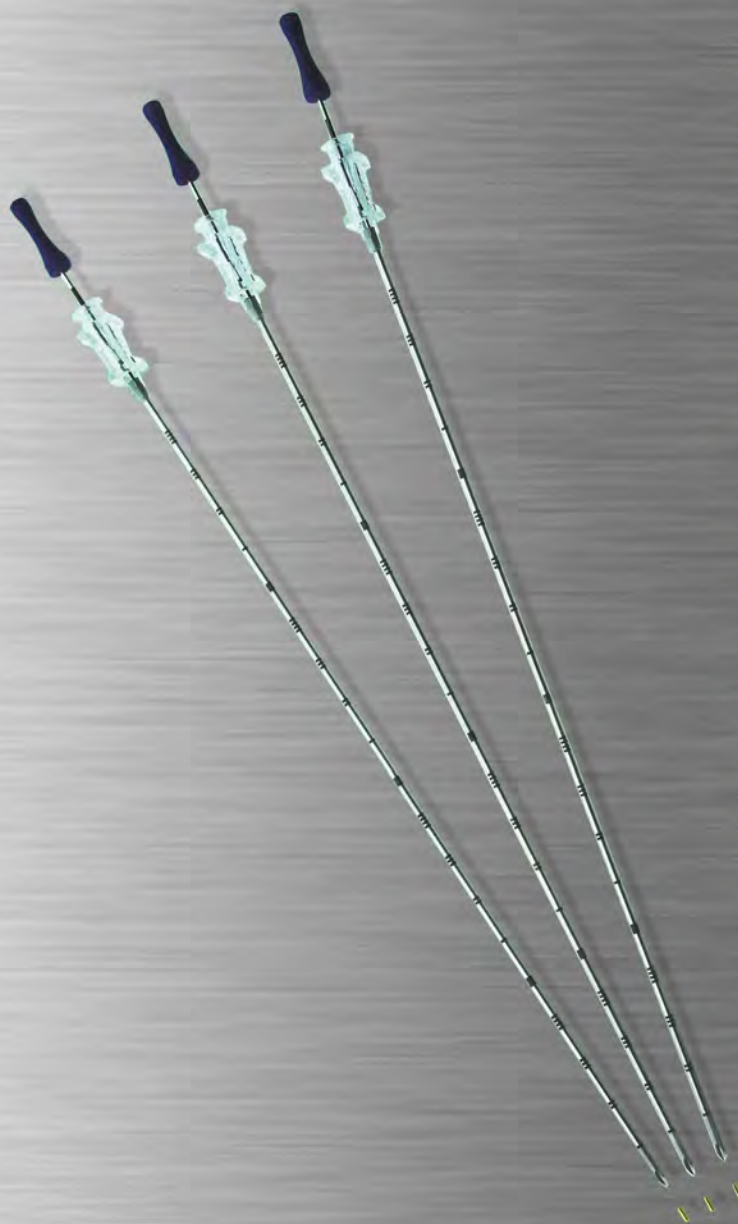
NCCN states that “highly conformal radiation therapy, such as IMRT, should be used to treat prostate cancer. IMRT significantly reduces the risk of gastrointestinal toxicities and rates of salvage therapy. Moderately hypofractionated image-guided IMRT regimens have been tested in randomized trials reporting similar efficacy and toxicity to conventionally fractionated IMRT. Daily prostate localization using IGRT is essential for target margin reduction and treatment accuracy. Imaging techniques, such as ultrasound, implanted fiducials, electromagnetic targeting and tracking or endorectal balloon, can improve cure rates and decrease complications (NCCN, “Clinical Practice Guidelines in Oncology”, Prostate Cancer 2015)

WARNING: Reimbursement policies vary widely from insurer to insurer and reimbursement policies of the same insurer may vary in different sections of the United States. As reimbursement policies are subject to change, AMAC® will endeavor, on a periodic basis, to review and revise, as necessary, all pertinent reimbursement information. Therefore, the information contained herein may not be accurate as at the time of use. Prior to submission of a claim for reimbursement, the user should contact the insurer (i.e., Medicare, Medicaid of private payer) to verify applicable codes and reimbursement levels. All dollar amounts listed in this document are subject to geographical change and/or specific DRGs. PLEASE NOTE: All five-digit numeric CPT codes, descriptions, instructions and guidelines are Copyright of the American Medical Association. AMAC® assumes no responsibility for the consequences related to the use of information contained in this document. All codes presented in this document are for informational purposes only. Presented is a menu of codes not intended for treatment prescription guidelines. AMAC®

\* Prices vary according to geographic location.

# 20G Needle

Improving Patient Care



Less pain and less trauma to anterior rectal wall

No need for patients to discontinue blood thinners i.e. Aspirin, Coumadin, Plavix etc.

Lower risk of infection due to less material transverse G from rectum into prostate

Implantable fiducial markers promote accurate target localization for high precision radiotherapy

Pre-Waxed needles arrive plugged with bone wax and markers.  
Aggressively priced compared to 17G & 18G needle sets.

<b>Ref. #</b>	<b>Description</b>	<b>Dimension</b>
105.1392US	Set (3) Needles with Marker	0.4 x 5 mm 20G - 20cm
105.1391US	Set (1) Needle with Marker	0.4 x 5 mm 20G - 20cm

All comments above based on physicians experience.

## QLRAD Single Gold Fiducial Markers Sterile

Available in many configurations  
Diameter 0.4 mm - 1.2 mm  
Lengths 3 mm - 7 mm  
Smooth or knurled design



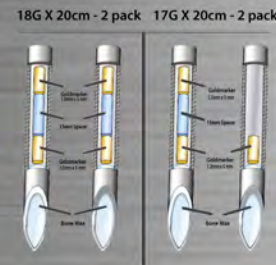
## QLRAD Pre-Waxed Needles with Gold Fiducial Markers Sterile

Available in many configurations  
17G, 18G, 20G needles - 20 cm long  
Diameter 0.4 mm - 1.2 mm  
Lengths 3 mm - 7 mm  
Smooth or knurled design



## QLRAD Spacer Sets Sterile

Available in many configurations  
17G, 18G needles - 20 cm long  
Diameter 0.4 mm - 1.2 mm  
Lengths 3 mm - 7 mm  
Spaced 20 mm or 25 mm



## QLRAD Coupled Marker Sets Sterile

Available in many configurations  
17G, 18G needles - 20 cm long  
Diameter 0.4 mm - 1.2 mm  
Lengths 3 mm - 7 mm  
Spaced 20 mm or 25 mm



## QLRAD Pre-Waxed Needles Sterile

Available in 17G, 18G needles - 20 cm long



## QLRAD Applicator Needles Sterile

Available in 17G, 18G needles - 20 cm long



\* Please see our website for additional sizes and information [www.QLRAD.com](http://www.QLRAD.com)  
Not all sizes and configurations available outside the USA

# QLRAD™



## **USA**

QLRAD INC  
80 SW 8th St  
Suite 2000  
Miami, Florida 33130  
P 630-833-5272  
Toll Free 888-596-8010  
Fax 630-833-5273

[www.QLRAD.com](http://www.QLRAD.com)  
[info@QLRAD.com](mailto:info@QLRAD.com)

## **Corporate Office**

QLRAD International LTD  
Inomenon Ethnon, 48  
Guricon House,  
3rd Floor, office 302  
6042, Larnaca, Cyprus  
P +35-7248-164 70  
F +35-7248 164 69

2017-6-1002

