

SMART LASER CONTROL

DESCRIPTION

LAP DORADO and DORADOnova laser systems for patient marking in radiation therapy will be operated by LAP CARINAnav control system. It also functions as an interface between the treatment planning software and the LAP laser system.

The control system consists of CARINAnav laser control software and three options of PC platforms.

SCOPE OF DELIVERY

- Two options of tablet PC
 - Pre-installed CARINAnav laser control software
 - Tabletop docking station with power cable (3 m)
 - Bluetooth gateway with connection cable (60 cm)
- or
- Desktop PC
 - Pre-installed CARINAnav laser control software on desktop PC
 - LED screen, keyboard, mouse
 - LAP RS485-USB converter

COMPATIBILITY

- DORADO 1, 3, 4
- DORADOnova 1, 3, 5

MEDICAL GRADE

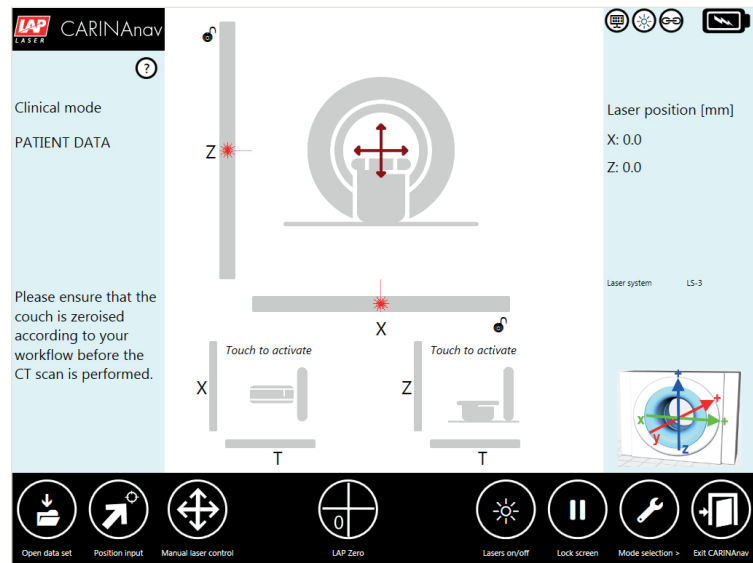
- All components have approvals for use in clinical environment

SUPPORTED DATA INTERFACES

- LAP file format
- DICOM isocenter import
- syngo.via RT Image Suite

NOTES

- 12 months standard warranty
- Installation is not included



Option 1:
Cybermed tablet PC



Option 2:
Baaske Docpad tablet PC



Option 3:
Desktop PC

TECHNICAL DATA

TABLET PC	Cybermed Tablet PC	Baaske Docpad Tablet PC	Desktop PC
Dimensions (W×D×H)	193×253×16 mm	228×150×13 mm	175x419x395 mm
Weight	923 g	554 g	14 kg
International Protection Rating	front: IP65; back: IPX1	IP65	not defined
Operating Temperature	0 ... 40°C	0 ... 50°C	10 ... 35 °C
Air humidity (rel. humidity, non-condensing)	10 ... 90 %	0 ... 95 %	5 ... 85 %
External power supply	100 ... 240 VAC, 50 ... 60 Hz	100 ... 240 VAC, 47... 63 Hz	100 ... 240 VAC, 50 ... 60 Hz
SCREEN			
Type	Touchscreen, LED backlight, capacitive multi-touch	Touchscreen, In-Plane Switching (IPS)	IPS Panel, LED backlit, anti-glare, 3H hard coating screen surface
Dimensions	9.7"	8.3"	19"
Resolution	1,024×768 px	1,920×1,200 px	1,280×1,024 px
HARDWARE AND OS			
Operating System	Windows 8.1	Windows 10	Windows 10
CPU	Intel® Atom™ Cedar view Mobile Processor N2600	Intel® Bay Trail Quad-Core Processor	Intel® Core™ i3-6100 Processor
RAM	4.0 GByte	2.0 GByte DDR3	8.0 GByte DDR4-2133
Hard disk	64 GByte SSD	64 GByte SSD	1,000 GByte HDD SATA III
BLUETOOTH GATEWAY			
Dimensions (W×D×H)	180×90×35 mm		
Weight	375 g		

www.LAP-LASER.com

LAP GmbH
Laser Applikationen

Zeppelinstrasse 23
21337 Lueneburg

Germany

Phone +49 4131 9511-95

Fax +49 4131 9511-96

Email info@lap-laser.com



ISO 9001
ISO 13485



NL-Tec Pty Ltd
Unit 10/16 Yampi Way
Willetton, WA 6155
Australia

Tel: +61 8 9259 5100
e-mail: info@nl-tec.com
www.nl-tec.com

