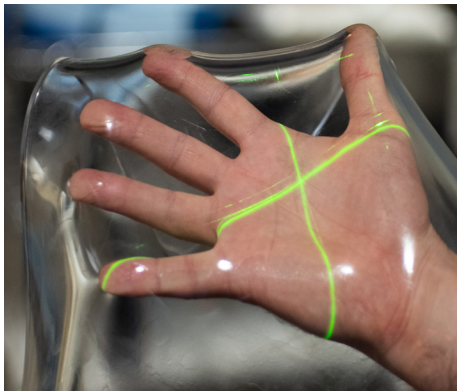


## Clearsight Bolus



*Clearsight Clear Bolus*

A common challenge with other manufacturers' bolus solutions is that their mustard-yellow color can make it difficult to see tattoos, positioning lasers, and air gaps through the material - particularly in dark treatment rooms. Cortex's new ClearSight Bolus is crystal clear enabling faster, easier setups than traditional bolus materials.

### Transparent

- 100% transparent
- Does not yellow under prolonged radiation exposure
- Easy to visualize tattoos, lasers and air gaps
- Able to be layered for custom thickness while retaining transparency

### Practical

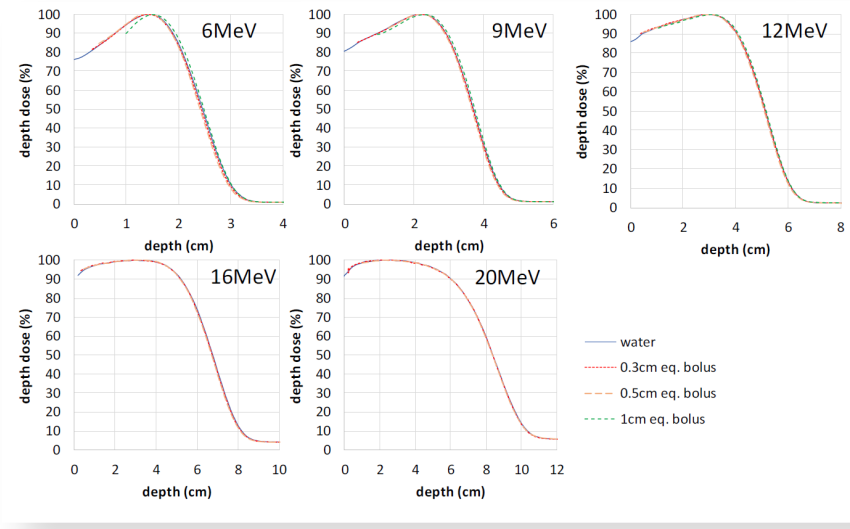
- No goey center like other bolus materials
- Able to be cut with scissors
- No need to wrap with plastic
- Sticks to itself, but not permanently

### Washable

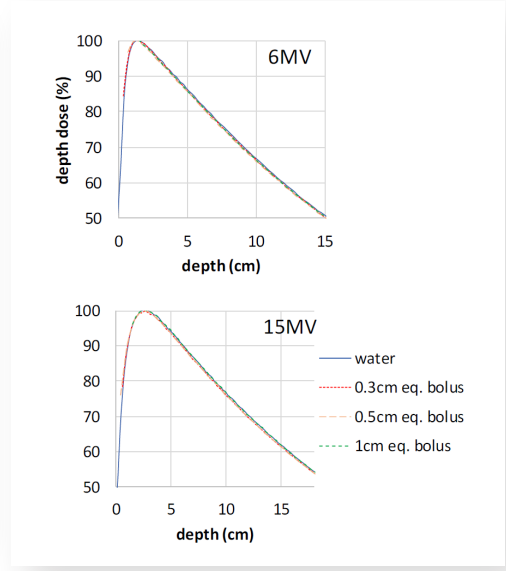
- "Semi-sticky" surface inherent to material
- Retains stickiness after washing and drying

Australia and New  
Zealand Distributor  
NL-Tec Pty Ltd  
+61 8 9259 5100  
info@nl-tec.com





Electron depth dose in water under each thickness of ClearSight Bolus.



Photon depth dose in water under each thickness of ClearSight Bolus.

B-03-18-01	0.34cm (equivalent to 0.3cm water) thickness, 30cm x 30cm, non-sterile, polymer gel bolus sheet (Qty 3)
B-03-20-01	0.34cm (equivalent to 0.3cm water) thickness, 40cm x 40cm, non-sterile, polymer gel bolus sheet (Qty 3)
B-05-18-01	0.57cm (equivalent to 0.5cm water) thickness, 30cm x 30cm, non-sterile, polymer gel bolus sheet (Qty 1)
B-05-20-01	0.57cm (equivalent to 0.5cm water) thickness, 40cm x 40cm, non-sterile, polymer gel bolus sheet (Qty 1)
B-11-18-01	1.15cm (equivalent to 1.0cm water) thickness, 30cm x 30cm, non-sterile, polymer gel bolus sheet (Qty 1)
B-11-20-01	1.15cm (equivalent to 1.0cm water) thickness, 40cm x 40cm, non-sterile, polymer gel bolus sheet (Qty 1)

## Technical Specifications

- Available in 30cm x 30cm and 40cm x 40cm sheets.
- Ratio of  $Z_{eff}$  for ClearSight and water throughout clinical range:  $0.761 \pm 0.02$ .
- Surface dose underneath ClearSight v. other popular Water Equivalent bolus products:  $-0.9\% \pm 2.3\%$  for photons,  $0.49 \pm 1.8\%$  for electrons.
- Change in photon and e- depth dose curves between ClearSight and water: negligible